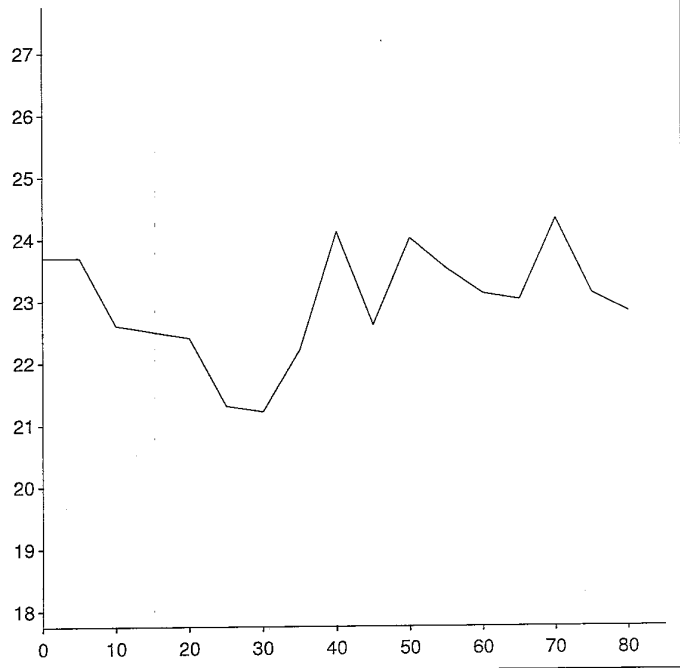
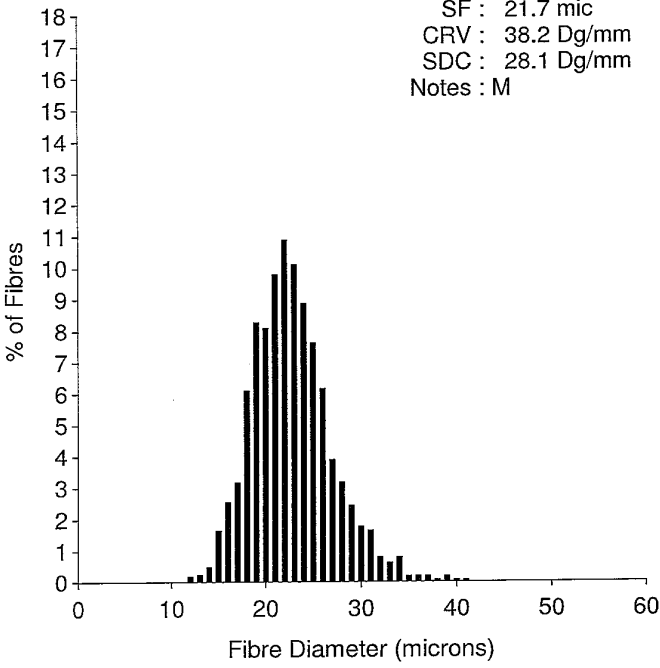


EID : Siebenhirte
 EarTag : Tru Sharile
 Micron : 22.7 mic
 SD : 4.2 mic
 CVD : 18.4 %
 CEM : 8.1 mic
 <15 : 0.9 %
 CF : 95.3 %
 SF : 21.7 mic
 CRV : 38.2 Dg/mm
 SDC : 28.1 Dg/mm
 Notes : M

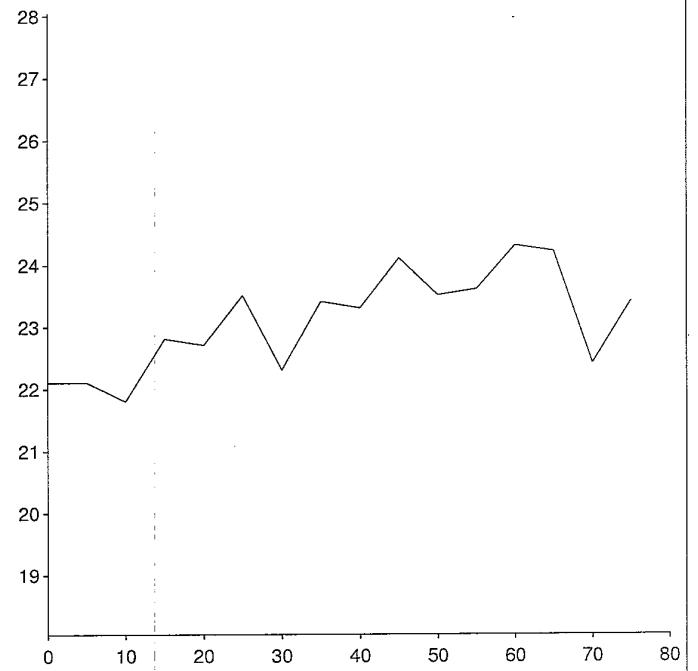
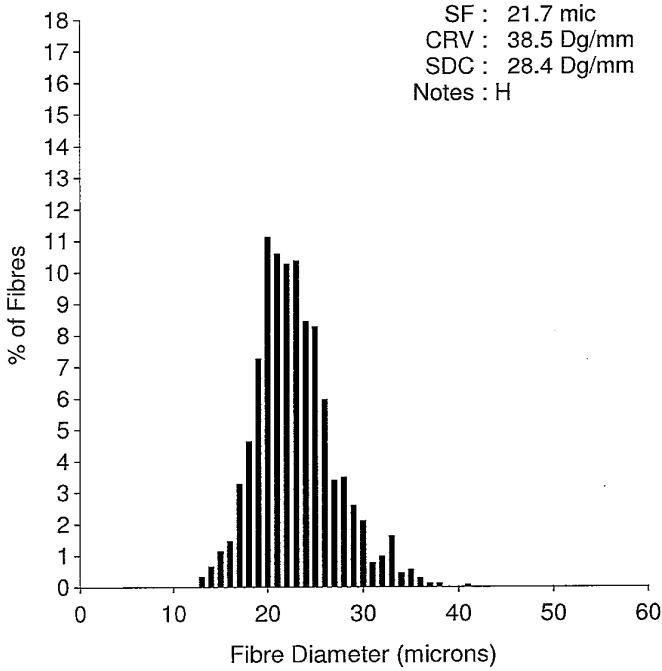
Staple Len : 85.0 mm
 Min Mic : 21.2 mic
 Max Mic : 24.3 mic
 SD Along : 0.90 mic



OFDA 2000 REPORT : SORTED BY EID/TAG
 Samples 02/05/2019 (Trim High On) (153Records)

EID : Siebenhirte
 EarTag : Tru Sharile
 Micron : 22.9 mic
 SD : 4.1 mic
 CVD : 17.9 %
 CEM : 8.0 mic
 <15 : 1.0 %
 CF : 95.2 %
 SF : 21.7 mic
 CRV : 38.5 Dg/mm
 SDC : 28.4 Dg/mm
 Notes : H

Staple Len : 80.0 mm
 Min Mic : 21.8 mic
 Max Mic : 24.3 mic
 SD Along : 0.80 mic



EID : Siebenhirte
 EarTag : Tru Sharile
 Micron : 23.8 mic
 SD : 4.7 mic
 CVD : 19.9 %
 CEM : 9.5 mic
 <15 : 0.3 %
 CF : 91.0 %
 SF : 23.0 mic
 CRV : 40.9 Dg/mm
 SDC : 29.3 Dg/mm
 Notes : V

Staple Len : 80.0 mm
 Min Mic : 22.4 mic
 Max Mic : 25.3 mic
 SD Along : 0.80 mic

